



Interland 2015 – Bulletin 1



Mole Valley Orienteering Club, the South East Orienteering Association and the English Orienteering Council invite the International teams to compete in the 2015 Interland Cup on 8th February. The competition will be held south of London in the Surrey Hills Area of Outstanding Natural Beauty and is to run alongside the English Southern Championships competition.

Programme

Date	Event	Place
Sunday, 8 th February 2015	Interland Cup /English Southern Championships	White Downs, Netley Heath & Sheeples

Participating Federations Nederlandse Oriënteringsloop Bond (NOLB), Vlaams Verbond voor Oriënteringssporten (VVO), Fédération Régionale des Sports d'Orienteering (FRSO), England (ENG) and the French Ligue Nord-Pas de Calais de course d'orientation (LNPPCO).

Team size/composition Teams of 42: 3 members in each of 14 classes: M14, M17, M20, M Open, M40, M50, M60, W14, W17, W20, W Open, W40, W50 and W60. Three to run, 2 to score in each class.

Detail of terrain and map

White Downs, Netley Heath and Sheeples feature the characteristic east/west ridge of the North Downs with a south-facing steep scarp slope and to the north, a gently sloping dip slope cut by a number of large re-entrants; some steep-sided. The woodland is extremely varied, ranging from ancient bluebell wood to managed plantation. Some plantations are deciduous, some coniferous, and many are quite mature. Most of the forest is very runnable though there are areas of brashings or undergrowth. There are pits and depressions throughout the area and also several small former quarried areas that are now wooded (see map vignette, right, for example).

Map updated 2014. Scale: 1:15,000 for 18-40 classes; 10,000 for all other classes; V.I. 5m. Offset-litho printed on waterproof material.

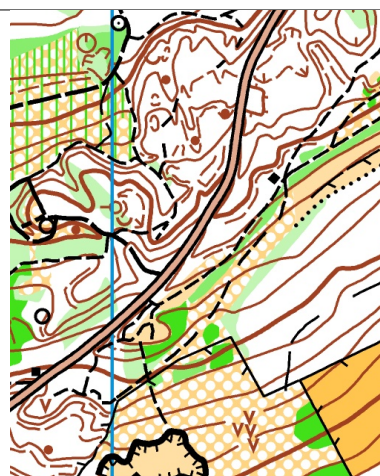
Previous maps of most of the area:

<http://www.mvoc.routegadget.co.uk/rg2/#1>

<http://www.mvoc.routegadget.co.uk/rg2/#15>

Organising Club

[Mole Valley OC](#)



Starts 09:30 – 10:40

Courses Courses will be longer than normal for Interland

Electronic punching system - Sportident

Prizegiving 13:00

Trophies: the Interland Cup and the Interland Junior Trophy

Event officials

Organiser: Simon Ling

Planner: Tony Burton

Controller: Colin Duckworth

Interland Coord: John Rye

jrexm2@aol.com

Entries

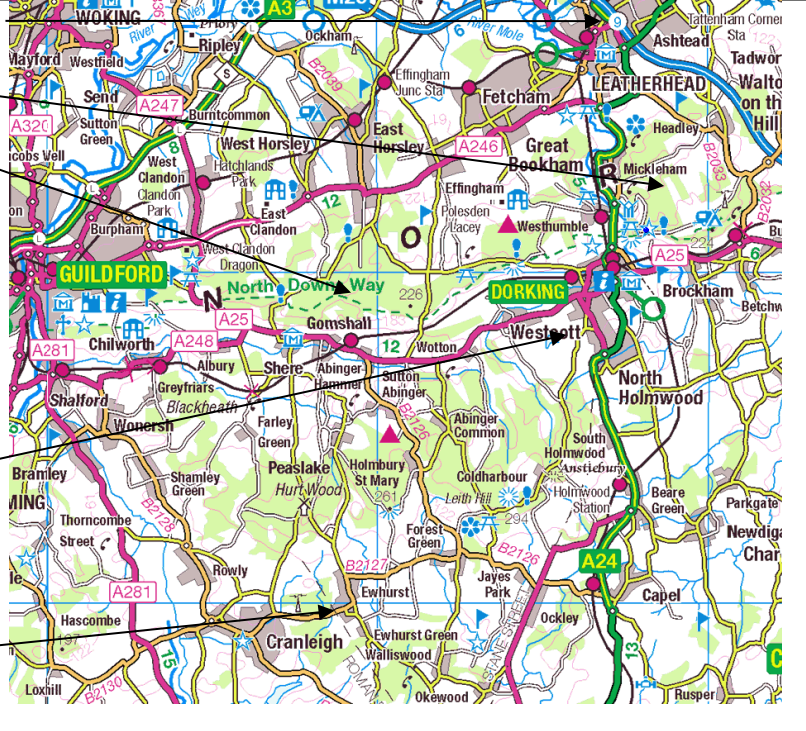

Made by team managers using the supplied entry form. Details of accommodation, meals and any special dietary requirements are to be included on the form. ENTRIES with data BY 17 JANUARY please. £11/£5 for Interland and £5/£3 for Saturday's race (21 and +, 20-) Saturday evening meal, bed (linen provided), breakfast and packed lunch - £40

Payments To be made by bank transfer, payable in pounds sterling – details from Bill Alexander, MV Treasurer - alexbill@btinternet.com by 17 Jan 2015



Interland 2015 – Bulletin 1



<p>M25 Junction 9</p> <p>High Ashurst</p> <p>White Downs (Sunday)</p> <p>The Nower, Dorking (Saturday)</p> <p>Sayers Croft</p> <p>Not to be used for navigation (Blue gridlines are 10km apart)</p>	
<p>Accommodation The accommodation is split between Surrey County Council's new outdoor learning centre at High Ashurst and Sayers Croft Field Centre.</p> <p>High Ashurst, Surrey's outdoor learning centre Dorking, Surrey RH5 6DQ http://www.surreycc.gov.uk/learning/surrey-outdoor-learning-and-development/information-about-sold/sold-centre-information/high-ashurst</p>	<p>Meals Saturday evening meal, breakfast and packed lunch</p> <p>Sayers Croft Field Centre Ewhurst, Surrey GU6 7SS http://www.sayers-croft.org.uk/home</p>
	<p>Saturday</p> <p>The Nower is a forested, steep, hill on the SW edge of Dorking (see map). Mainly natural mixed woodland with small coniferous plantations with some small, disused, quarry workings and evidence of old military trenches. Map: 1:5,000 with 5m V.I. Short length courses (1.1 – 4.2km)</p> <p><i>Start times for visiting Interland competitors: last start 1530</i></p>
<p>Buses</p>	<p>Due to access difficulties at one of the accommodation sites and at the event, Interland Coord must be informed if buses are being used</p>

Interland Point of Contact:

John Rye

Orienteering England Interland Team Manager and Interland 2015 Coordinator

52 Douglas Avenue EXMOUTH Devon EX8 2HE
jrexm2@aol.com

Telephone: +44 (0)1395 272373

Cell: +44 (0)07902 832247

OrienteeringEngland.org.uk